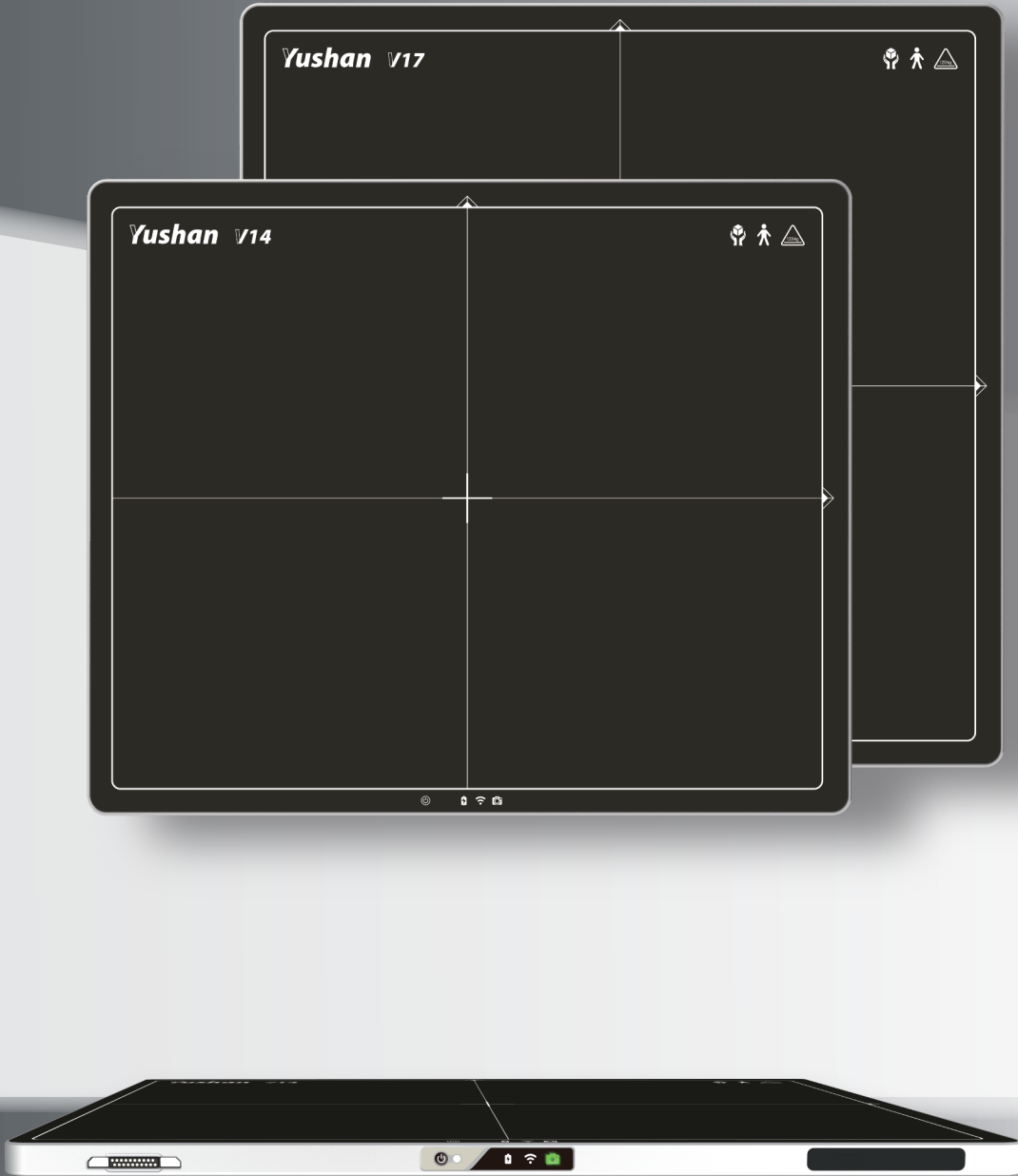


Yushan Series



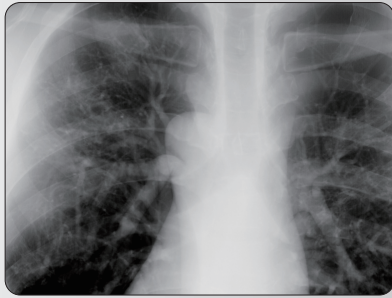
FLAT PANEL DETECTOR

For Digital Radiography

Being one of top solution providers in the world, we deliver an user-oriented product which equips high-quality image, lightweight, dual battery and innovative wifi antenna to enhance work efficiency.

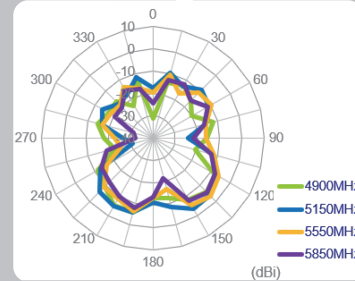
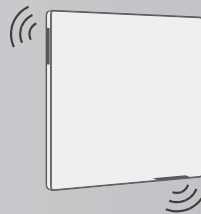
Ultra low dose

Ultra low dose is ideal for various applications with outstanding modulation transfer function (MTF) and detective quantum efficiency (DQE) without compromising image quality.



Transfer in a flash

With specialized antenna design, our product can achieve fast transfer and receive strong signal at anytime and anywhere. In the meantime, built-in wireless communication supports IEEE 802.11ac enabling a state-of-the-art transfer speed. Furthermore, we can be very proud to announce that the full image can be received within 2 seconds, achieving one of the fastest in the world.



Smart design for Hot swap and seizing image in time

User can freely exchange battery at any time without stopping, shutting down or any power supply connect to the system. Moreover, our product ensures that the last image is kept in device before shutting down, in case of accidents

Every second counts

Concerning urgent situations, our product provides an option to work smoothly without battery or power supply.



Featherweight design

In order to enhance the mobility, the whole device weighs only 2.7kg (1417) / 3.2kg (1717) including battery, making it effortless to carry around.

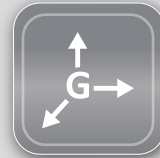
Easy cleaning

The detector is IPX6-rated for water resistant, allowing user to clean it easily.



Self management and monitoring

Since our detector has built in sensors including temperature and gravity, which are constantly monitoring even during panel in powered off state to make sure the panel is functioning properly and user can operate safely.



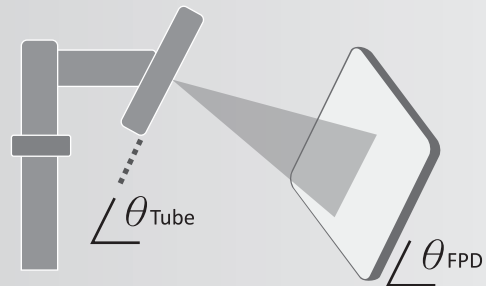
Remarkable long-lasting feature

With our powerful battery lasting over 8 hours while capturing more than 1000 images at every 30 seconds sequentially without any interruption.



Intelligent tracking support

Moon always faces the Earth with the same side. Likewise, our system enables the normal vector of detector to accurately align with X-ray source. It effectively avoids the possible distortion appearing on the image.



Large storage capacity

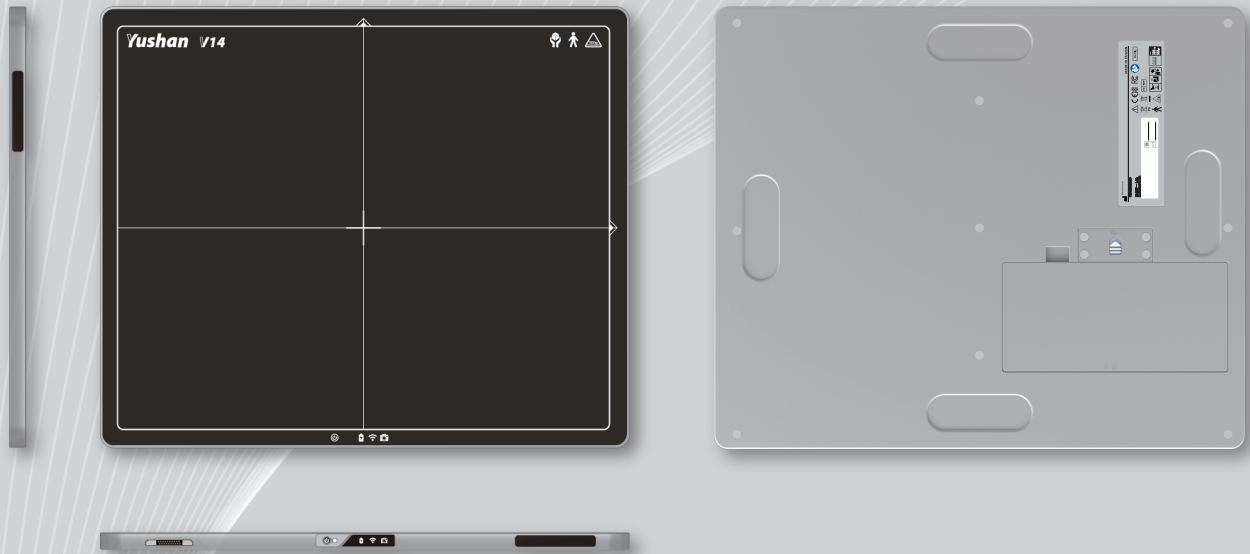
Up to 300 images can be stored while the panel is offline, sufficient storage spaces allowing numerous calibration data to be saved.

Access point mode

Equipped with access point function, our product can connect to computer without extra wireless configuration setting. It undoubtedly brings a user-friendly interface to improving work efficiency.



Overview



Specifications

	V14	V17
Outline dimension (ISO 4090)	383 x 460 x 15 mm	460 x 460 x 15 mm
Sensor array	a-Si photodiode	
Scintillator	CsI / GOS	CsI / GOS
Resolution	2500 x 3052	3072 x 3072
Pixel size	140 um	
Grayscale	16 bit	
Image storage	300 offline images	
Wifi	802.11ac / 2 antennas / 2s scan to display / AP mode	
Drop height	70 cm	
Housing material	Mg-Al alloy	
Weight (battery included)	2.5 (CsI) / 2.7 (GOS) kg	3.1 (CsI) / 3.1 (GOS) kg
Waterproof	IPX6	
Durability (Face load / Point load)	300 / 120kg	
Battery autonomy	8 hours*	
Trigger mode	AED mode / Software SYNC mode	
Calibration data	10 set of calibration data can be stored in it	
Log file	Log file, sensor data and other calibration data are available	
Accessories	Battery / Magnetic connector cable with ethernet and power	
Operation temperature / Humidity	10 ~ 35 °C / 15 ~ 80 %	

*In SYNC mode, user can capture more than 1000 images at every 30 seconds and lasting over 8 hours.