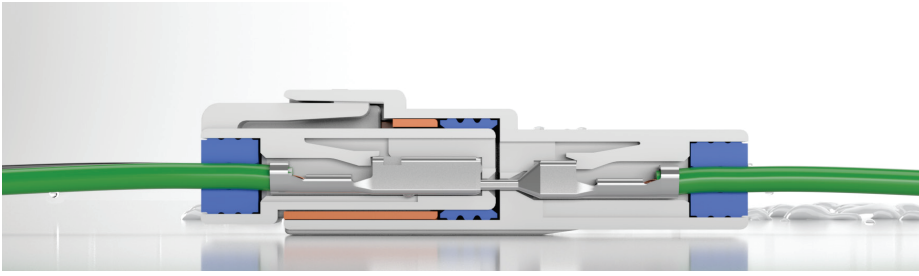


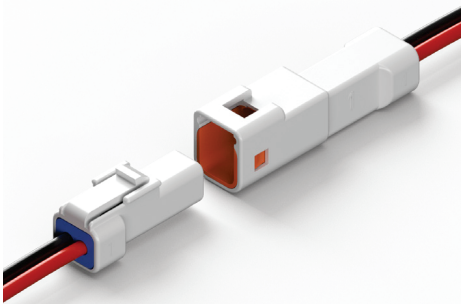
# Wire-to-Wire Waterproof Connectors



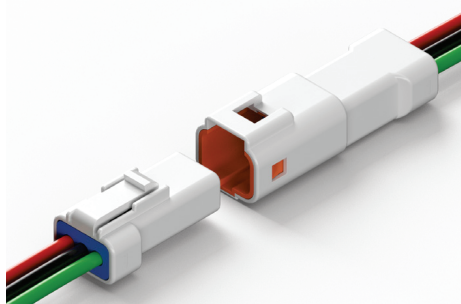
## Specifications

- 2-, 3-, 4-, 6-, 8-contacts available
- Contact pitch: 2.0mm (Row 4.0mm)
- Waterproof grade: IPX7 of IEC 60529
- Applicable wire: AWG #22 to #26, OD Ø1.4 to 1.7mm
- Current rating per contact: 3A AC/DC
- Voltage rating: 250V AC/DC
- Insulation resistance: 1000MΩ min.
- Withstanding voltage: 1500V AC
- Operating temperature: -40°C to 105°C
- **RoHS2 & Reach compliance**

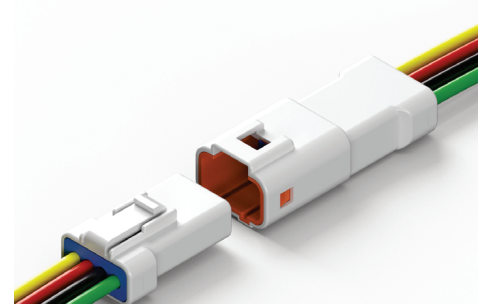
### 2 Contacts



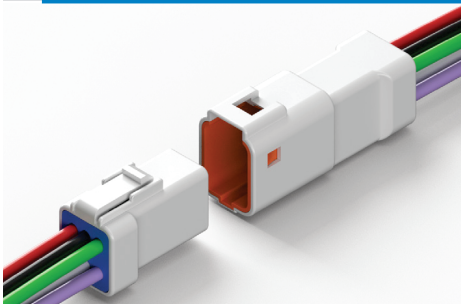
### 3 Contacts



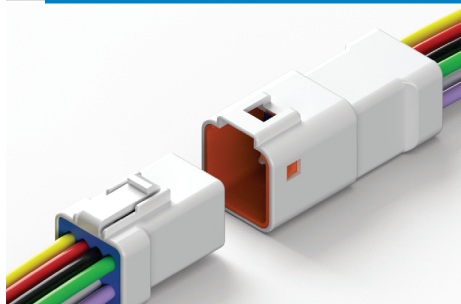
### 4 Contacts



### 6 Contacts



### 8 Contacts



## E-tec Representative

STELIAU TECHNOLOGY  
41-43 rue Périer  
92120 Montrouge  
France

Tel: +33 / 1 / 55 58 04 04  
Fax: +33 / 1 / 55 58 04 00

Mail : [contact@steliau.fr](mailto:contact@steliau.fr)  
Web : [www.steliau.fr](http://www.steliau.fr)

2.0mm pitch wire-to-wire waterproof connectors. The connector has a waterproof silicone ring on the back and contact surface, as well as a Snap-on lock function when in contact. Therefore, it has an IPX7 waterproof rating.

### **Application:**

Outdoor display system: Outdoor lighting systems such as display panels, street lights, and landscape lighting.  
E-mobility: e-bikes, this connector is common on extreme terrain-type bikes. With flexible use in wire-to-wire and wire-to-board designs, this connector is ideal for small-sized vehicle pipes or PCB boards with limited space.